

MaxExchange 7

VERSION 7.5

Keep your sales force updated

For users in remote offices to effectively team-sell and face clients and prospects with accurate information, they need to have access to up-to-the-minute data. MaxExchange enables Maximizer Enterprise™ users to work from a single database that is regularly synchronized to keep everyone up to date.

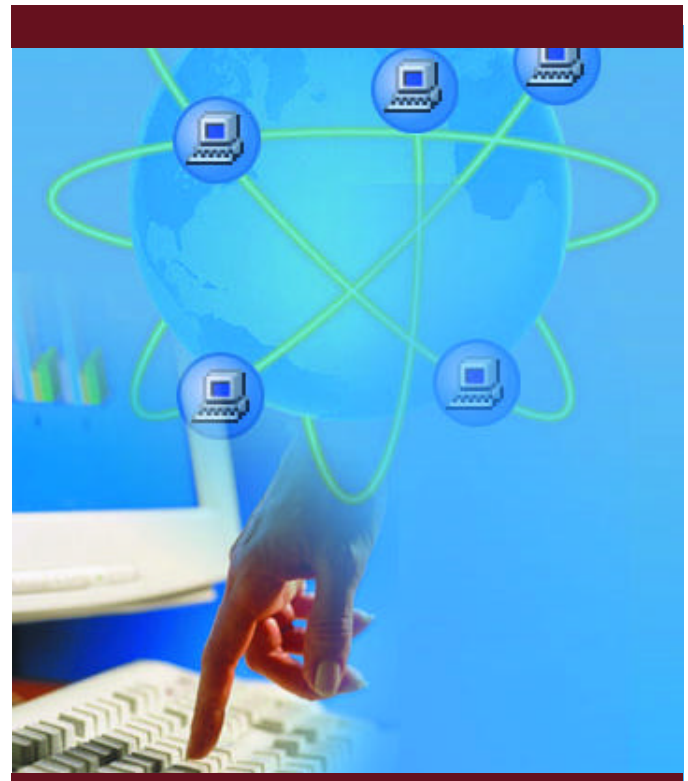
Give all staff, no matter where they are working from - at a remote office, on the road, or at a home office - access to up-to-date information.

Features & Benefits

All remote users' copies of the database regularly communicate with the central database. At scheduled times, MaxExchange automatically merges remote database changes with the central database and receives new, updated data back - all using existing network infrastructure so it's simple for users and administrators.

- **Rapid synchronization and reduced costs**

Data is synchronized quickly, using MaxExchange's data compression and integrity checking. To further reduce synchronization times and costs, MaxExchange transfers only field-level updates, and lets you synchronize a select subset of your database to remote offices and users.



- **Easy for remote users**

Remote users can simply let MaxExchange work in the background as they perform their daily tasks. It will communicate with the central database at automatically scheduled times, or users can manually synchronize as often as they choose.

- **Data integrity and security**

To give remote sales people the right information to follow-up on leads, information on specific opportunities is distributed to the appropriate team

www.maximizer.com

MaxExchange 7

VERSION 7.5

member. MaxExchange also tracks users' time zones to determine which changes took place first - even in the same field. Further, the system administrator can enhance data security through multi-level access and control of all distribution options.

● Reliability

Data and synchronization are reliable - even over the Internet. MaxExchange detects out-of-sequence and lost data packets and automatically requests a re-send from the originating computer.

● Flexibility

Users can choose to share a networked database, work remotely with their distributed copies of the database on their local machines, or act as a workstation with no distributed copies of the database on their local machine. MaxExchange synchronizes using the following transport methods: over the Internet via FTP, over a WAN connection, with CDs or other removable media, or over your existing email system - or a combination of them all.

Corporate Headquarters

Americas	Europe, Middle East, and Africa	Asia	Australia
+1 604 601 8000 phone +1 604 601 8001 fax info@maximizer.com www.maximizer.com	SL6 1RR United Kingdom +44 (0)1628 587777 phone +44 (0)1628 587778 fax info@max.co.uk www.max.co.uk	+852 2598 2888 phone +852 2598 2000 fax info@abcmultiactive.com www.abcmultiactive.com	+61 (0) 2 9957 2011 phone +61 (0) 2 9957 2711 fax info@maximizer.com.au www.maximizer.com.au

© 2003 Maximizer Software Inc. All rights reserved. Other brands and/or products used may be trademarks, registered trademarks, or registered service marks of their respective owners.

Minimum System Requirements

MaxExchange Server Computer

- Pentium II processor, 450 MHz or better
- 128 MB RAM or better (256 MB recommended)
- Microsoft Windows NT Server / Enterprise Server version 4.0 with Service Pack 5 (or higher), Windows 2000 Server / Advanced Server, or Windows XP Server
- Pervasive 2000i Workgroup Engine included with the Maximizer installation

Remote Workstation

- Pentium processor, 133 MHz or better
- 64 MB RAM or better - (128 MB for Windows 2000)
- Microsoft Windows (95, 98, ME, NT 4.0, 2000, or XP)
- Pervasive 2000i Workgroup Engine included with the Maximizer installation

Additional Requirements

It is recommended that the MaxExchange Server computer and MaxExchange Remote computers (distribution sites) use a more powerful platform in terms of processor and RAM. A generous amount of free disk space is also required for temporary packet storage and packet processing. Dedicated computers for the Maximizer Enterprise database host and MaxExchange Server are recommended. Depending on the transport method used between the MaxExchange server and the remote clients, both the MaxExchange Server and the Remote Workstation computers will require the following:

FTP/E-mail:

- Internet Service Provider and modem or other Internet connection if MaxExchange is to send packets over the Internet via FTP
- VIM- or MAPI-compliant email system for the MaxExchange Server and MaxExchange Remote computers
- Post Office version of the email system used above

WAN/Network Direct:

- 16-bit ISA or better Network Interface Card.
- We recommend an ISDN line service or transport service with a 128 Kbps or better transfer rate such as ADSL, cable modem, or direct T1 line
- Depending on your WAN architecture, an ISDN, ADSL, or cable modem, or network router



Total Customer Relationship Management